



AutoSolar

## JC-HRH-20



### Data sheet

## Solar Mounting System Teja de Barro

Hercic mounting composes the entire connection grounding lug system, allowing contractors/ installers the flexibility, on-site control and familiarity of any kind installation.

### FEATURES

Wind Load:	<b>Up to 60m/s</b>
Wind Load:	<b>Up to 1.5KN/m</b>
Installation Site:	<b>Roof</b>
Applicable Module	<b>Clay tile - Roof</b>
ModuleOrientation:	<b>portrait or landscape</b>
Tile angle	<b>parallel to roof</b>
Standar Compliance:	<b>AS/NZS1170.2-2002, SGS</b>
Material:	<b>Anodized Aluminum 6005-T5 + stainless steel 304</b>
Life Span:	<b>More than 25 years</b>

### WARRANTY



For all components

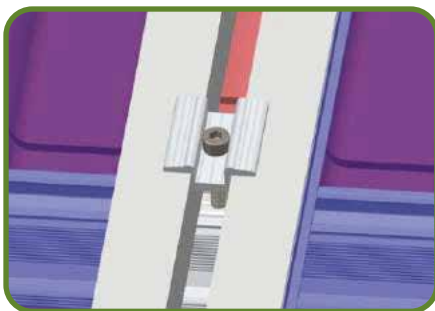


Life Span

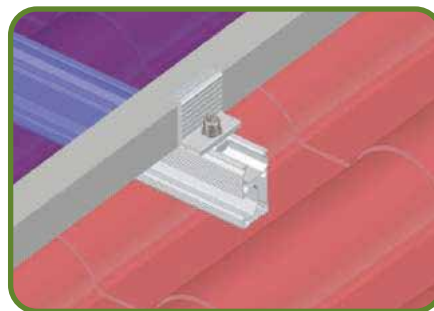
### BENEFITS

Excellent fixation  
Easy installation  
Long life

Rail splice: 2 kinds of rail splice for option



Mid Clamp



End Clamp



Roof Hook

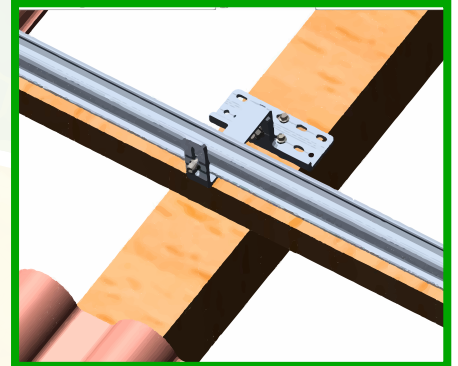
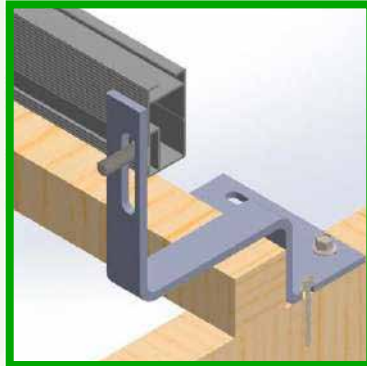
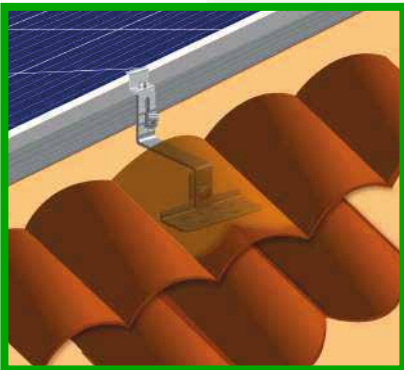
Data Sheet

Solar Mounting System  
Teja de Barro

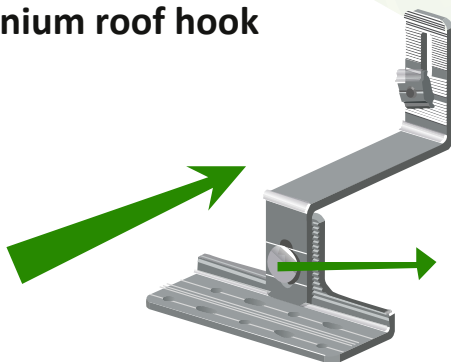
JC-HRH-20



Tile roof mounting systems with great application flexibility for both the commercial and residential sectors.



Adjustable aluminium roof hook



ADJUSTABLE  
NUT  $\updownarrow$

