

# Ultracell®

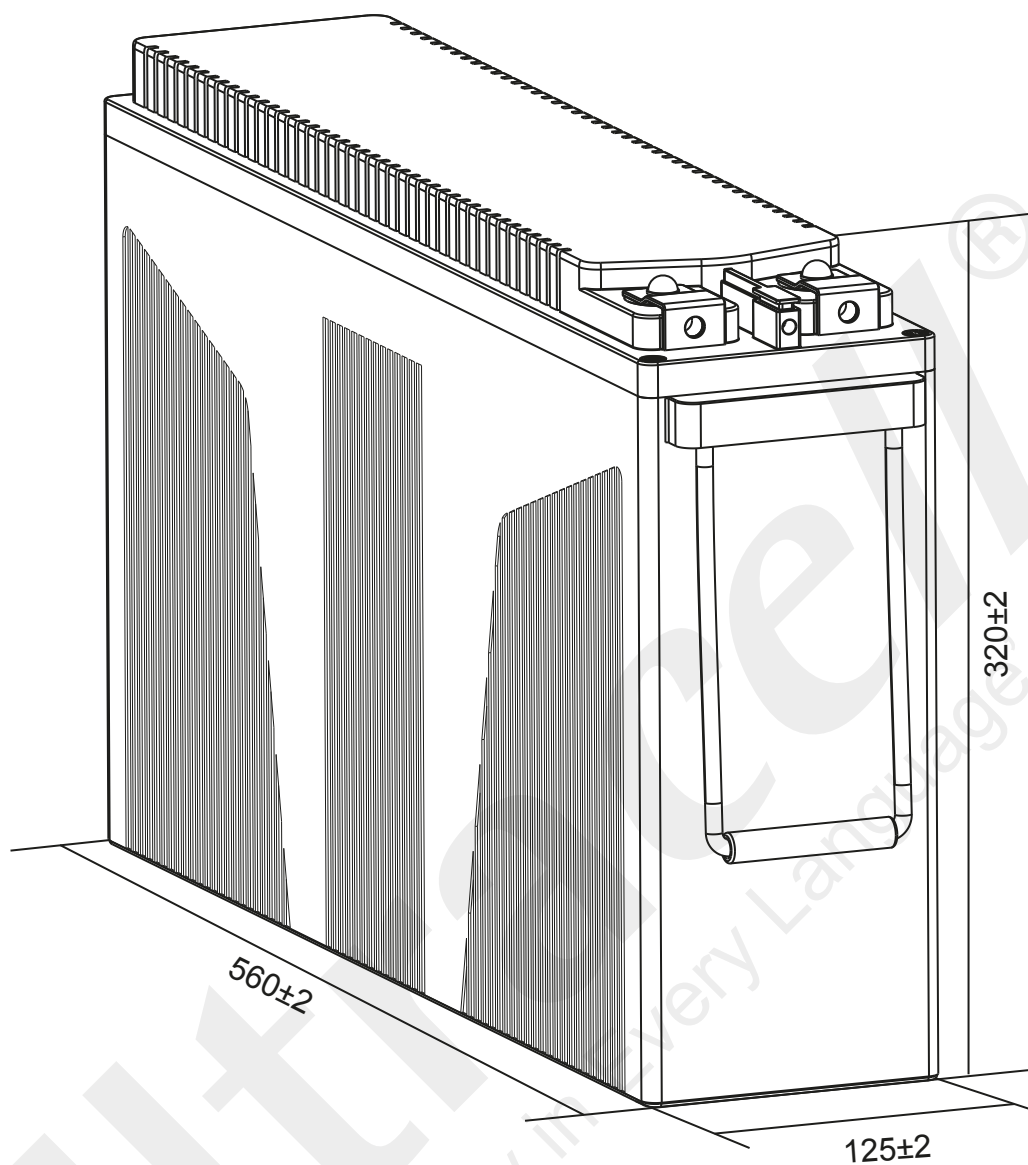
'Quality in Every Language'

UFT200-12

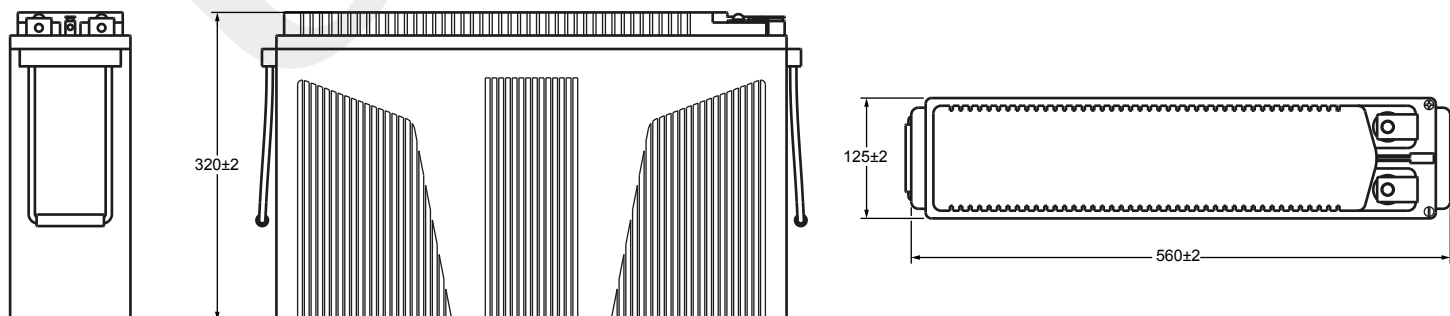
12V 200Ah (C<sub>10</sub>)

12V 250Ah (C<sub>100</sub>)

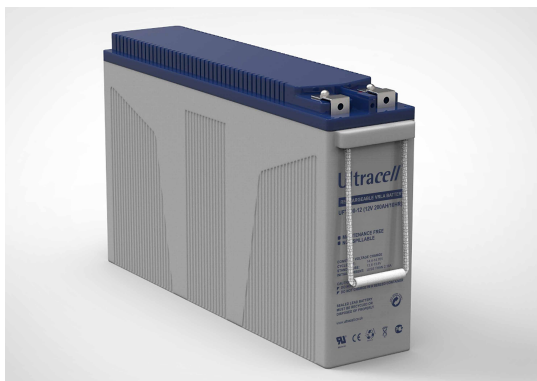
Front Terminal Series



## Technical Dimensions (mm)

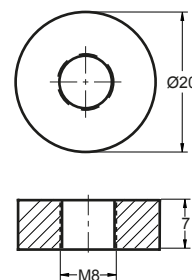


Image



Terminal Dimensions (mm)

Standard Terminal: F11



Technical Specification

<b>Output</b>	Nominal Voltage	12V
	Nominal Capacity (100HR)	250 Ah
<b>Terminal Type</b>	Standard Terminal	F11
<b>Container Material</b>	Standard Option	ABS
	Flame Retardant Option (FR)	ABS (UL94:VO)
<b>Rated Capacity</b>	(100HR 1.80V/cell, 25°C)	250 Ah/2.5A
	(20HR 1.80V/cell, 25°C)	210 Ah/10.5A
	(10HR 1.80V/cell, 25°C)	200 Ah/20.0A
	(5HR 1.75V/cell, 25°C)	175 Ah/35.0A
	(1HR 1.60V/cell, 25°C)	118.1 Ah/118.1A
<b>Max Discharge Current</b>	2000A (5s)	
<b>Internal Resistance</b>	Approx 3mΩ	
<b>Discharge Characteristics</b>	Operating Temp Range	Discharge: -15 ~ 50°C Charge: 0 ~ 40°C Storage: -15 ~ 40°C
	Nominal Operating Temp Range	25 ± 3°C
	Cycle Use	Initial Charging Current less than 60A. Voltage 14.1V ~ 14.4V @ 25°C Temp. Coefficient -30mV/°C
	Standby Use	No limit on initial charging current. Voltage 13.5V ~ 13.8V @ 25°C Temp. Coefficient -20mV/°C
	Capacity affected by Temperature	40°C 103% 25°C 100% 0°C 86%
<b>Design Floating Life at 20°C</b>	12 Years	

Self Discharge

Ultracell® UFT batteries may be stored for up to 6 months at 25°C and then a refresh charge is required. For higher temperatures the time intervals will be shorter.

Constant Current Discharge / Constant Power Discharge At 25°C (Amperes & Watts/Cell)

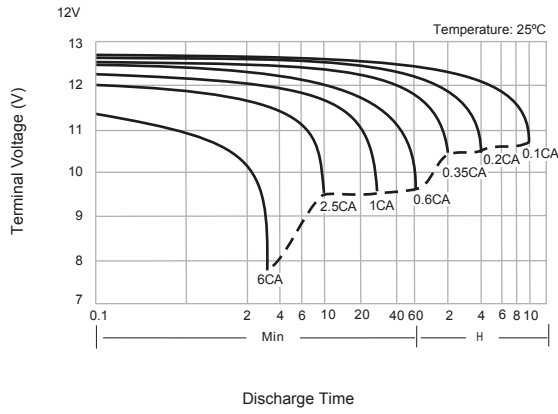
A = Amperes W = Watts

F.V/TIME	10 min	15 min	20 min	30 min	45 min	60 min	2 hours	3 hours	4 hours	5 hours	6 hours	8 hours	10 hours	20 hours
<b>1.85V/cell</b>	287.5	256.2	226.7	185.7	143.2	97.3	63.3	47.7	38.0	31.8	28.7	22.4	18.7	9.80
<b>1.80V/cell</b>	536.8	491.0	431.8	357.7	278.0	188.6	123.3	93.3	74.5	62.4	57.1	44.2	37.0	19.8
<b>1.75V/cell</b>	368.6	315.2	269.6	207.6	156.1	111.3	70.9	53.0	42.0	35.0	29.9	24.4	20.3	10.7
<b>1.70V/cell</b>	392.5	333.1	280.4	214.7	159.1	115.7	73.2	54.6	43.1	35.8	30.3	24.9	20.6	10.8
<b>1.67V/cell</b>	410.4	343.6	286.3	219.1	162.5	118.1	74.4	55.4	43.7	36.2	30.6	25.1	20.8	10.9
<b>1.60V/cell</b>	428.3	368.0	294.7	223.5	164.9	123.9	77.5	57.4	45.1	37.4	30.9	25.7	21.3	11.2
	736.6	666.4	534.0	411.9	309.2	231.9	147.2	109.9	86.8	72.2	60.4	50.2	41.6	21.9

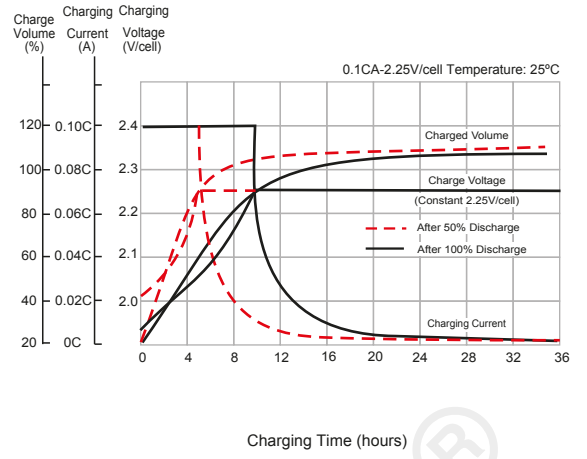




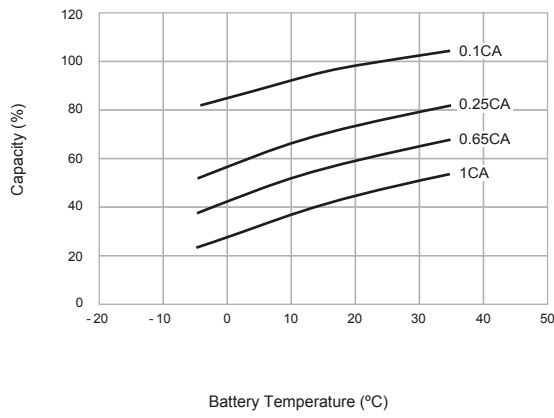
## Discharge Characteristics



## Charging Characteristics



## Temperature Effects in Relation to Battery Capacity



## Effect of Temperature on Long Term Float Life

